

WETLAID NONWOVENS LINES



KEY FACTS

- **Reference supplier** of process and machinery equipment for nonwovens production lines
- **Tailor-made machines** to produce a wide product portfolio
- **Continuous improvement** of manufacturing processes
- Proposal of **comprehensive solutions**
- Assistance to our customers **diversification**
- **Extensive Know-how** in fibers mix & nonwoven processes
- Technical & process R&D
- **Nonwovens competence center** for trials and **Development** of a full range of **industrial equipment**

OUR EXPERTISE

Complete lines

from stock preparation to winder

Rebuilds of existing line

Conversion, upgrades, quality improvement...

Services / Audits / Trials

- On-site audits to improve capacity and quality
- Services to maintain key equipment
- Industrial trials on site or in our wetlaid nonwovens competence center

APPLICATIONS

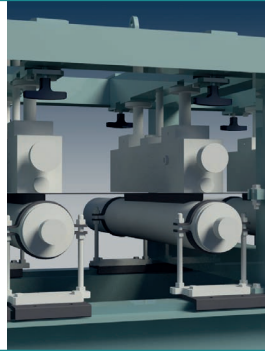
- **Electrical application** : Battery separators, pasting paper, capacitor dielectric
- **Wipes & medical** : Flushable wipes, industrial wipes
- **Building construction** : Shingles, BUR, Flame retardant media
- **Filtration** : Teabags and coffee pads, filters for air, water and oil
- **Home & office furnishings** : Wall Cover, overlay
- **Other end uses** : Thermal Insulation, Ceramic and carbon fibers materials

OUR EQUIPMENT PORTFOLIO

The Rotoformer is a proven forming technology that can produce a wide variety of specialty paper and nonwovens webs. The Rotoformer design has been improved to provide substantial enhancement to its performances.



The hydroentanglement unit, also called spunlace unit, can accept a dry or wet formed continuous web. This unit can be used on a single layer or dual layer web. After the web has been hydroentangled by high pressure jets, it can be further treated by pressing, drying, and winding.



The Saturator Unit with Microflow Applicator is a flat wire designed for binder application to a web. The Microflow Applicator is a curtain type unit that uniformly distributes a binder solution. Custom designed vacuum boxes accurately control web solids level and binder content.



Hydrofiber® has been developed to form and produce a wide variety of nonwoven grades. To get optimum web formation, the inclined wire technology is mandatory to disperse the long fibers by using a large volume of water.



DID YOU KNOW ?

- ALLIMAND has a wetlaid nonwovens competence center in USA that allows making trial under industrial conditions.
- Our competence center is dedicated to customers, R&D teams and Allimand partners and is used to test, validate and optimize a process before its large-scale deployment.
- The objectives are to reduce the technical & commercial risks and support decision-making.

ABOUT US

Allimand has a worldwide presence.

With 85% of our turnover generated from exports, our team and representatives support our customers in 50 countries around the world.

Our wetlaid nonwovens competence center is located in New York state – USA.

